

U.S. Army Public Health Center

Army Influenza Activity Report

Week ending 11 January 2020 (week 2)

Influenza Vaccination Coverage*

As of 16 January 2020

N/A	DoD
92%	Army Active Duty
85%	Army Guard
76%	Army Reserve

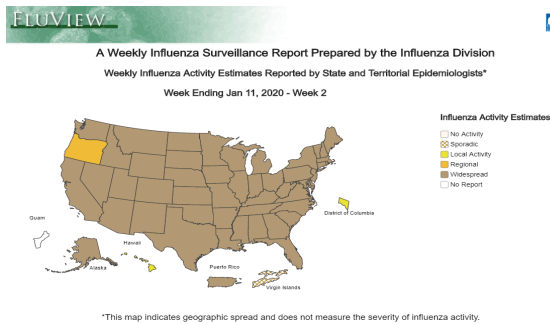
*Data Source: MEDPROS, ASIMS, MRRS

SUMMARY

During week 2, 5,691 specimens were submitted for testing. Influenza A accounted for the majority (47%) of positive specimens submitted for testing. PHC-P had the highest percent positive rate for influenza A compared to other regions, and it is the only region to have a percent positive rate higher than its historical average. PHC-C accounted for the majority of positive influenza A specimens; 64% of positive influenza A specimens were from non-AD people. Those under the age of 18 accounted for the majority (38%) of total positive respiratory specimens which was followed by those 18 to 29 years of age (27%). Fourteen of the 17 hospitalization were due to type A influenza.

GEOGRAPHIC SPREAD

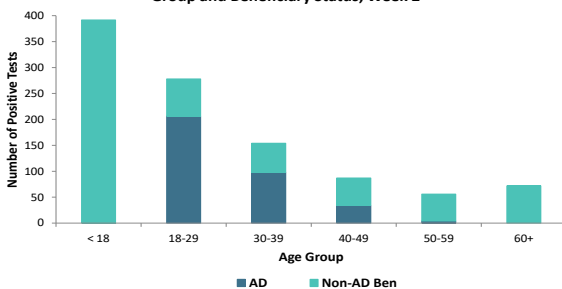
Click to enlarge image



In week 2, widespread activity was reported in Puerto Rico and 48 states. Regional activity was reported in Oregon. Local activity was reported in the District of Columbia and Hawaii. Sporadic activity was reported in the U.S. Virgin Island, and Guam did not report.

DEMOGRAPHICS

Positive Respiratory Specimen Results from Army MTFs by Age Group and Beneficiary Status, Week 2

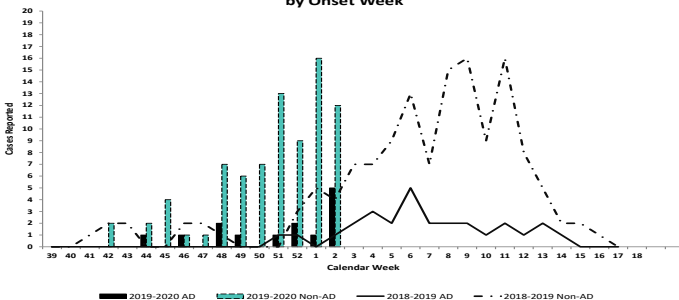


AD: In week 2, 342 positive respiratory specimens in Active Duty Service Members were submitted, demonstrating a 51% increase in the number of positive specimens in this population from week 1. The majority of positive specimens were in 18-29 year olds (n=206, 60%), followed by 30-39 year olds (n=98, 29%).

Non-AD: There was a 6% increase in the number of positive results submitted in the non-AD population from week 1, of which 56% were in patients under 18 years old.

INFLUENZA-ASSOCIATED HOSPITALIZATIONS

Army Influenza-Associated Hospitalizations Reported in DRSi by Onset Week



So far this season, a total of 93 cases have been reported to DRSi. As of 14 January, seventeen influenza-associated hospitalizations with onset dates in week 2 were reported to DRSi. So far this season, influenza B-associated hospitalizations have accounted for 53% of all reported hospitalizations (n=49), followed by influenza A (n=42, 45%); two were unknown. The majority of hospitalized cases have been unvaccinated (n=68, 73%). The average age of hospitalized patients so far this season is 26 years old. This time last season, 25 cases were reported.

*DRSi does not capture cases older than 65 years old for influenza-associated hospitalizations.

Additional Resources: [APHC Influenza Reports](#), [Centers for Disease Control](#), [Disease Reporting System internet](#), [ESSENCE](#)

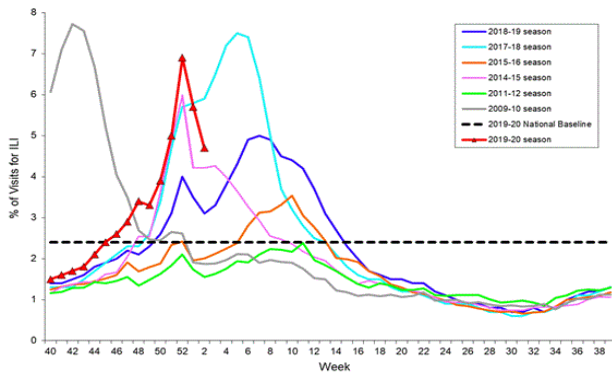
Key: ILI-Influenza-Like Illness; DRSi- Disease Reporting System Internet; ADV-Adenovirus; RSV-Respiratory Syncytial Virus; SM-Service Member; MEDPROS- Medical Protection System; ASIMS- Aeromedical Services Information Management System; MRRS- Medical Readiness Reporting System

Questions?
Email [APHC DEP](#)
410-436-7605

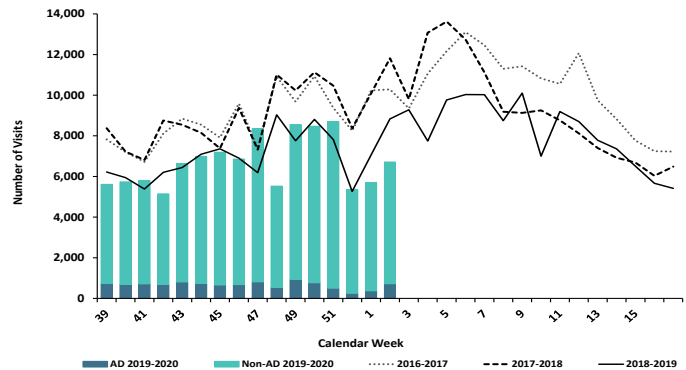
ILI ACTIVITY - UNITED STATES

ILI ACTIVITY - ARMY

Percentage of Visits for Influenza-like Illness (ILI) Reported by the U.S. Outpatient Influenza-like Illness Surveillance Network (ILINet), Weekly National Summary, 2019-2020 and Selected Previous Seasons



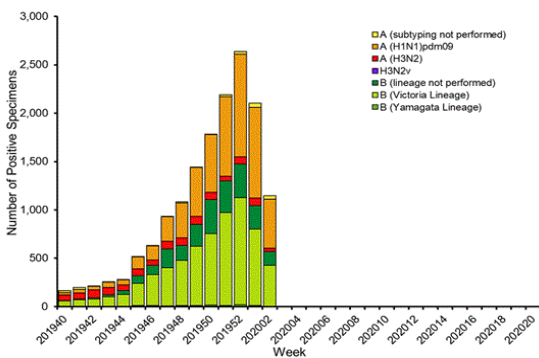
ESSENCE Weekly Outpatient Clinic Visits for Influenza-like Illness
Army MTFs, All Services, 2016-2019



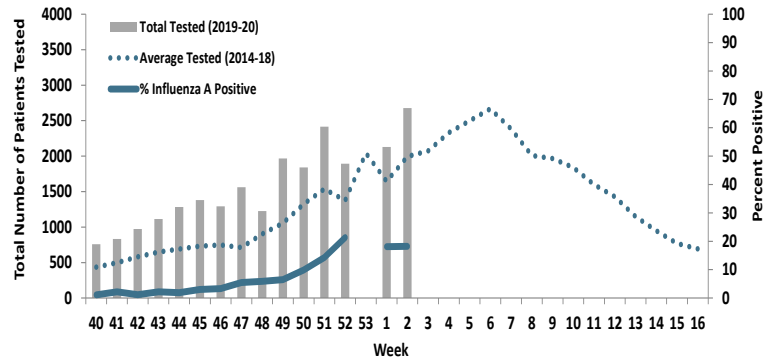
Nationwide in week 2, incident ILI activity was 4.7%. This is above the national baseline of 2.4%. Regionally, the percentage of outpatient visits for ILI ranged from 3.0% to 7.4%. All regions reported a percentage of outpatient visits for ILI which is above their region-specific baselines. At Army medical treatment facilities, incident ILI activity increased overall from week 1 to week 2 by 17.6%; AD case counts increased by 93.8% from week 1 to week 2.

LABORATORY RESPIRATORY SPECIMEN TESTING

Influenza Positive Tests Reported to CDC by U.S. Public Health Laboratories, National Summary, 2019-2020 Season



Proportion of Positive Influenza A Specimens for U.S. Army 2019-2020



Nationwide, 1,904 specimens were submitted to CDC, of which 60% were positive. Influenza A accounted for 50% of the total positive specimens submitted to the CDC in week 2. In the Army population, 18.2% of 2,677 specimens were positive for influenza A.

		Week 51	Week 52	Week 1	Week 2	Season Total
Test Types Among Positive Influenza A Specimens	RAT	199	222	188	275	1130
	Culture	4	0	2	1	31
	PCR	142	181	196	211	1099
Army MTF Laboratory Results, 2019-20	Influenza A	345	403	386	487	2260
	Influenza B	394	470	349	418	2786
	Adenovirus	11	6	6	7	129
	Enterovirus	0	0	0	0	7
	Parainfluenza	13	8	6	8	178
	RSV	181	114	106	119	1140
	Negative	4361	3085	3777	4652	45278
Total	5305	4086	4630	5691	51778	

Of the 5,691 respiratory labs tested in week 2, 1,039 (18.2%) were positive for any type of respiratory illness. The most common type of positive lab in week 2 was influenza A, which accounted for 47% (n=487) of positive results. Influenza B was the second most common positive respiratory illness (n=418, 40%), followed by RSV (11%), adenovirus (1%), and parainfluenza (1%).

Rapid antigen tests represented 56% of the influenza A tests ordered, which was followed by PCR tests (43%) then cultures (<0.1%).

Locations providing week 2 laboratory data as of 15 January 2020: Ft. Belvoir, Ft Benning, Ft Bliss, Ft Bragg, Ft Campbell, Ft Carson, Ft Drum, Ft Gordon, Ft Hood, Ft Huachuca, Ft Irwin, Ft Jackson, Ft Knox, Ft Leavenworth, Ft Lee, Ft Leonard Wood, Ft Meade, Ft Polk, Ft Riley, Ft Rucker, Ft Sam Houston, Ft Stewart, Ft. Wainwright, Korea, Redstone Arsenal, Tripler, West Point, and Walter Reed.

*NOTE: Madigan AMC data is also received weekly, but cannot be included at this time due to reporting limitations from MHS Genesis.

LABORATORY RESPIRATORY SPECIMEN TESTING

Region	Installation	Influenza A			Influenza B			Adenovirus		
		No. Tested	% Positive	Baseline % Positive	No. Tested	% Positive	Baseline % Positive	No. Tested	% Positive	Baseline % Positive
PHCA	Ft. Belvoir	335	8.7	13	191	25.1	100	86	3.5	100
	Ft. Benning	273	15	14.7	273	10.3	0			
	Ft. Bragg	137	9.5	10.5			100			
	Ft. Campbell	159	6.3	7.5	159	12.6	0			100
	Ft. Drum	18	5.6	28.6	5	100				100
	Ft. Eustis			29.2			100			
	Ft. Gordon	94	14.9	8.4	94	6.4	0			100
	Ft. Jackson	61	13.1	10.2	61	18	0			
	Ft. Knox	6	33.3	14.3	6	0	3.6			
	Ft. Lee	42	11.9	12.1	5	100	100			
	Ft. Meade	20	40	0						
	Ft. Rucker	25	8	50	25	0	0			
	Ft. Stewart	98	10.2	13.2	98	19.4	0			100
	Redstone Arsenal	19	21.1	0	19	15.8	0			
West Point Military Academy	35	28.6	15.4	8	37.5	0			100	
PHCA	Ft. Bliss	463	15.1	16	449	23.6	0			3.8
	Ft. Carson	97	10.3	13.5			100			
	Ft. Hood	190	10	10	189	9	3.3	26	0	
	Ft. Huachuca	9	0	11.8	11	27.3	0			
	Ft. Irwin	47	2.1	6.7	47	12.8	0			
	Ft. Leavenworth	41	34.1	11.8	40	10	2.9			
	Ft. Leonard Wood	65	10.8	11.1	65	13.8	0			
	Ft. Polk	55	12.7	3.4	6	100	100			
	Ft. Riley	64	15.6	14.3	64	6.3	0			
	Ft. Sam Houston	401	20.2	12.7	401	15.7	1.4			100
Ft. Sill	97	25.8	7.4	20	100	100				
PHCE	Landstuhl Regional Medical Center	37	13.5	15.1	32	9.4	0	32	9.4	4.8
PHCP	Ft. Wainwright	59	6.8	6.9	59	25.4	0			
	Korea	129	40.3	21.3	77	1.3	0	78	1.3	4.2
	Tripler Army Medical Center	113	22.1	9.6	111	11.7	0	6	0	2.3
Region	Installation	Enterovirus			Parainfluenza			RSV		
		No. Tested	% Positive	Baseline % Pos.	No. Tested	% Positive	Baseline % Pos.	No. Tested	% Positive	Baseline % Pos.
PHCA	Ft. Belvoir				90	4.4	100	189	15.3	20.8
	Ft. Stewart							14	21.4	26.3
PHCC	Ft. Bliss							440	14.1	10.4
	Ft. Carson							13	23.1	28.6
	Ft. Hood				26	0		71	14.1	68.8
	Ft. Leavenworth							4	50	23.5
	Ft. Polk							7	0	16.7
Ft. Riley							15	20	23.8	
PHCE	Landstuhl Regional Medical Center				34	5.9	1.6	34	5.9	14.3
PHCP	Ft. Wainwright							59	1.7	6.9
	Korea			0	78	2.6	2.1	79	5.1	8.5
	Tripler Army Medical Center	6	0	0	6	0	2.3			100

No.: Number of specimens tested during MMWR week 2 2020.

% Pos.: Percentage of positive specimens reported during MMWR week 2 2020.

Baseline % Pos.: Percentage of positive specimens reported in MMWR week 2 during influenza seasons from September 2012 - May 2019.

Missing values indicate that specimens were not tested for the disease during the week of interest.

A Weekly Influenza Surveillance Report Prepared by the Influenza Division

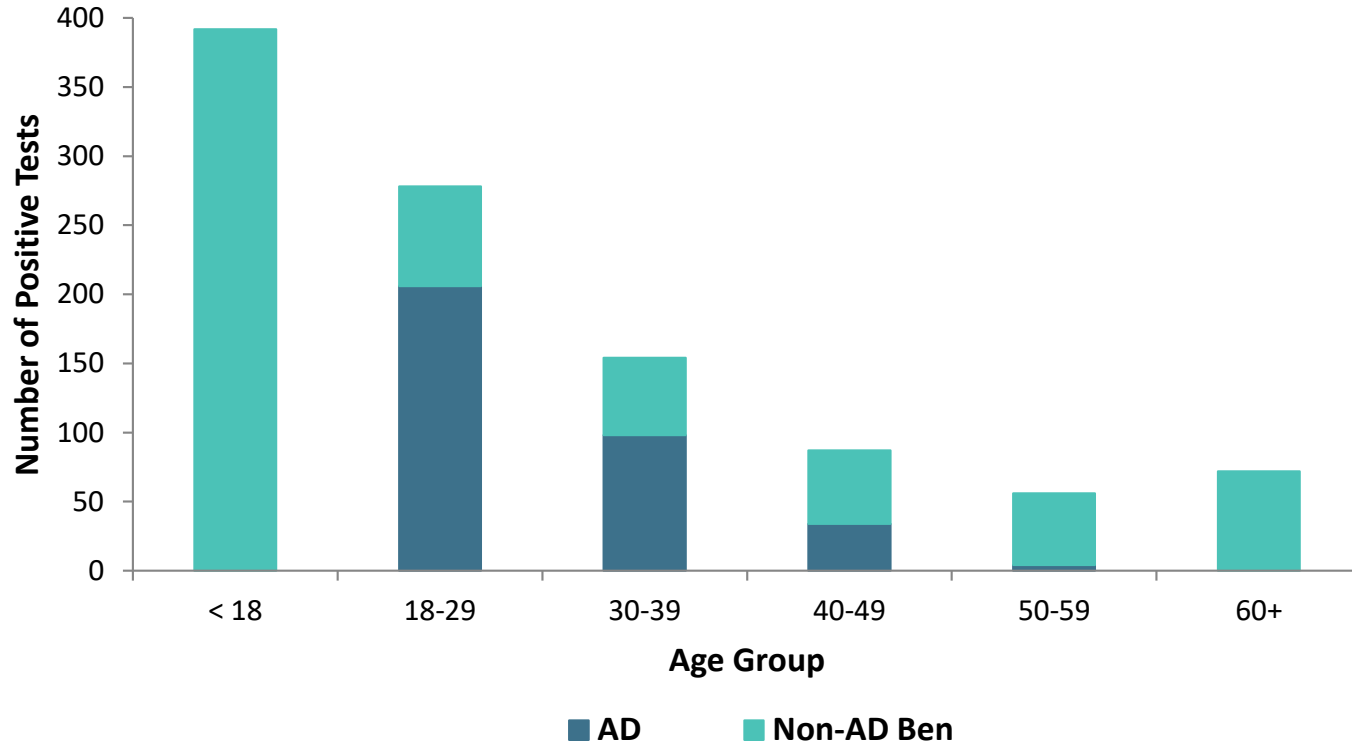
Weekly Influenza Activity Estimates Reported by State and Territorial Epidemiologists*

Week Ending Jan 11, 2020 - Week 2



*This map indicates geographic spread and does not measure the severity of influenza activity.

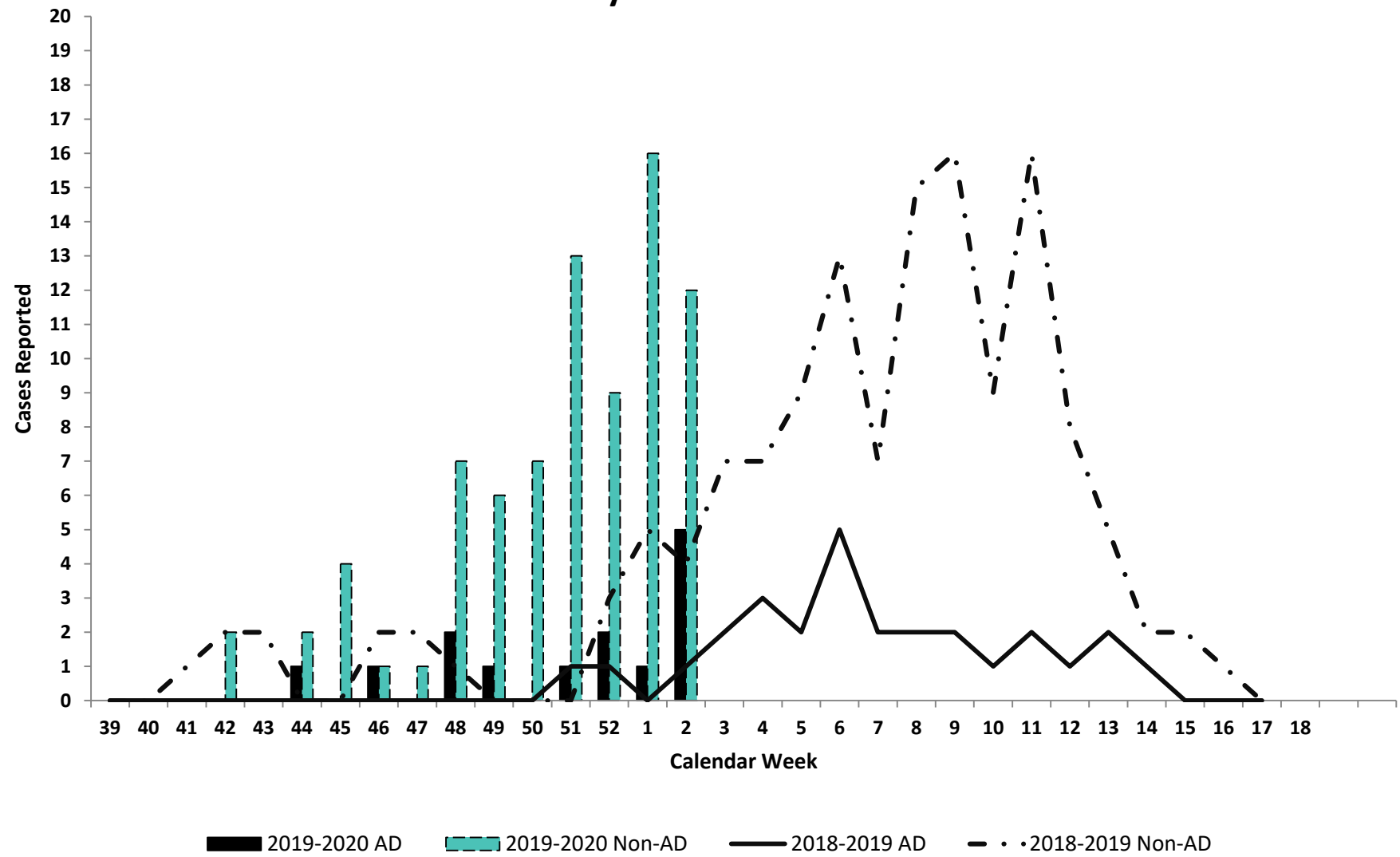
Positive Respiratory Specimen Results from Army MTFs by Age Group and Beneficiary Status, Week 2



Week 2			
Age Group	AD	Non-AD Ben	Season Total
< 18	0	392	3810
18-29	206	72	1036
30-39	98	56	695
40-49	34	53	360
50-59	4	52	285
60+	0	72	314
Total	342	697	6500

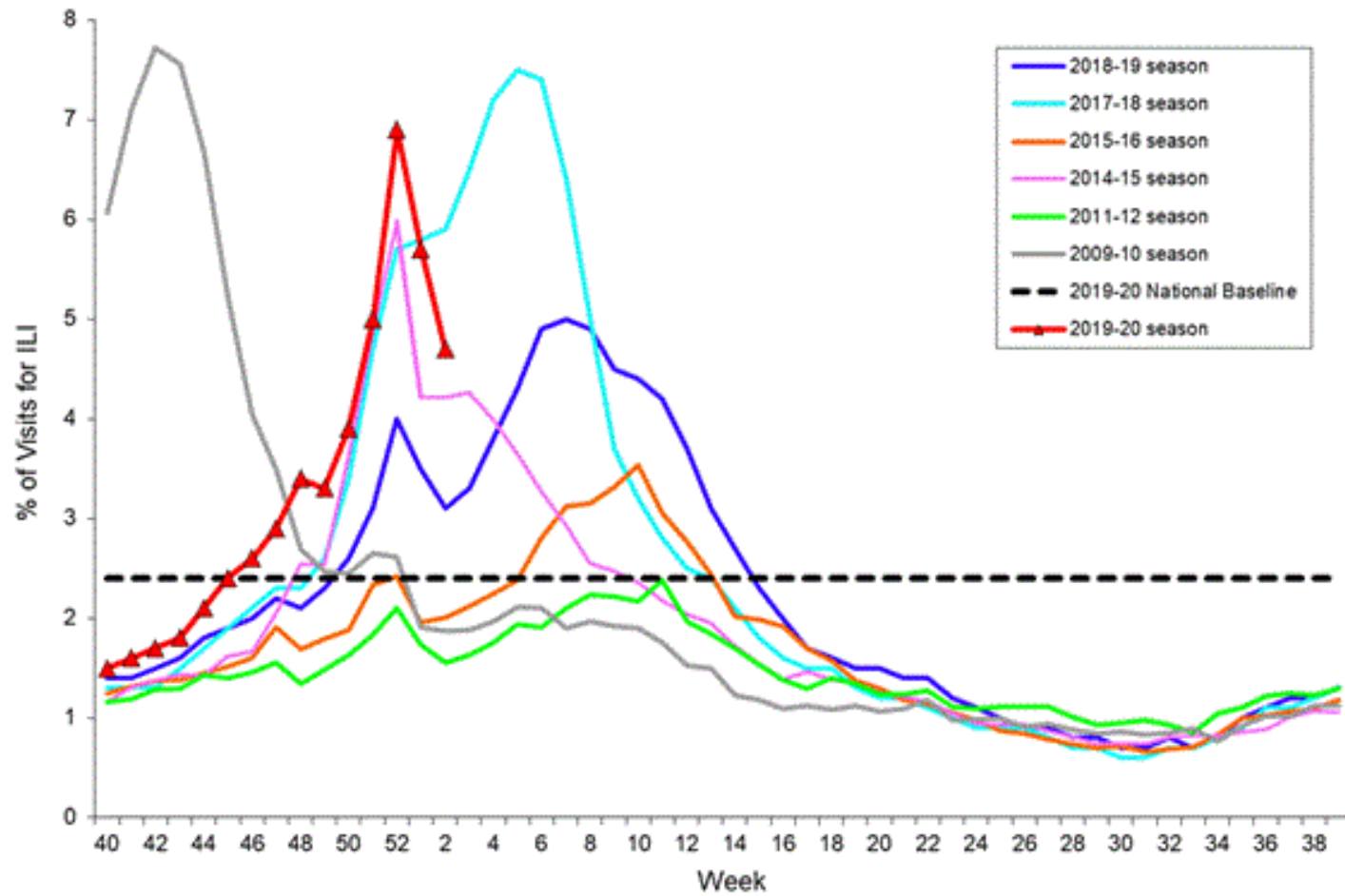


Army Influenza-Associated Hospitalizations Reported in DRSi by Onset Week



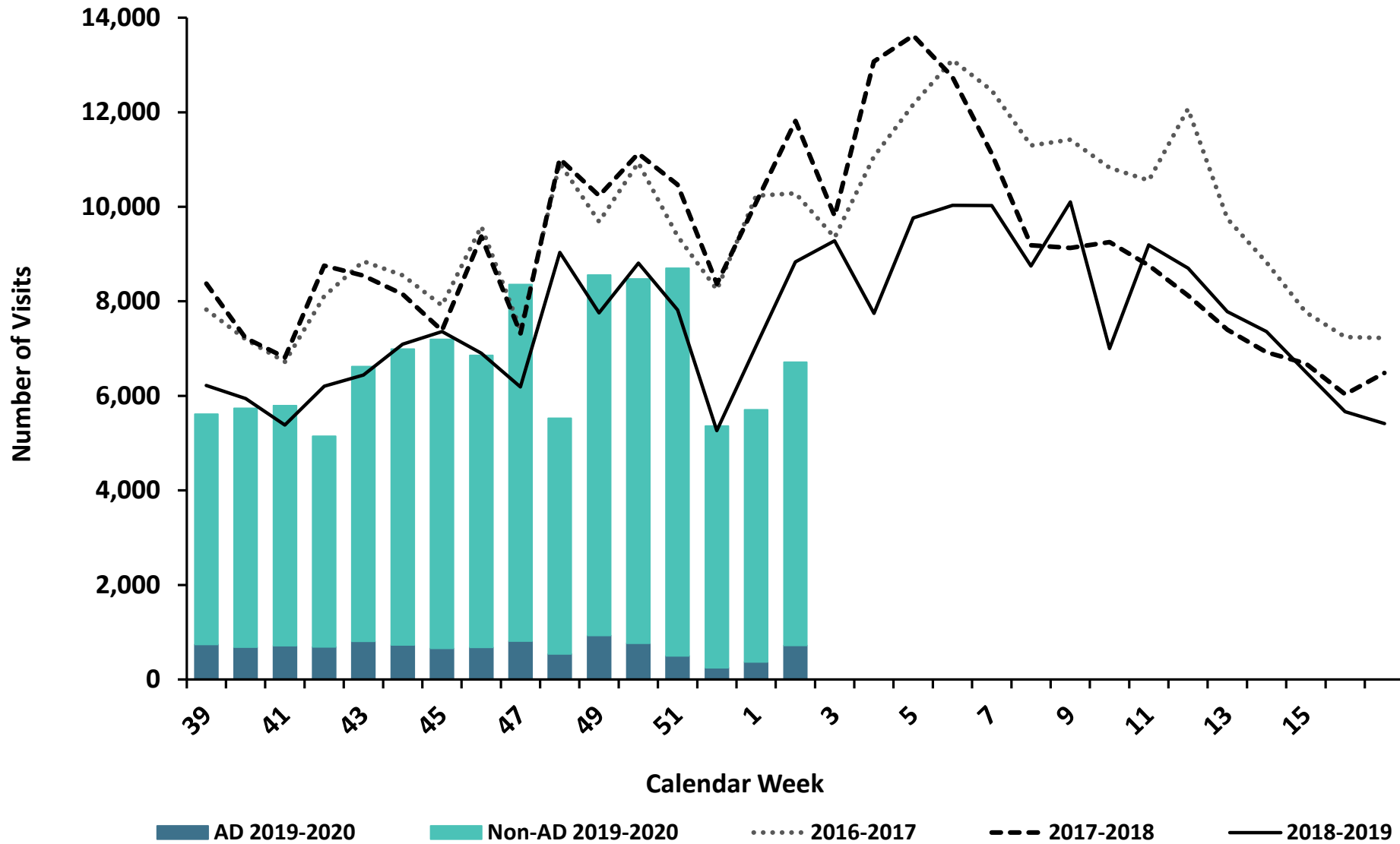
Note: Reportable influenza cases are defined as only cases that have been hospitalized and are under the age of 65.
Data as of 14 January 2020.

Percentage of Visits for Influenza-like Illness (ILI) Reported by the U.S. Outpatient Influenza-like Illness Surveillance Network (ILINet), Weekly National Summary, 2019-2020 and Selected Previous Seasons

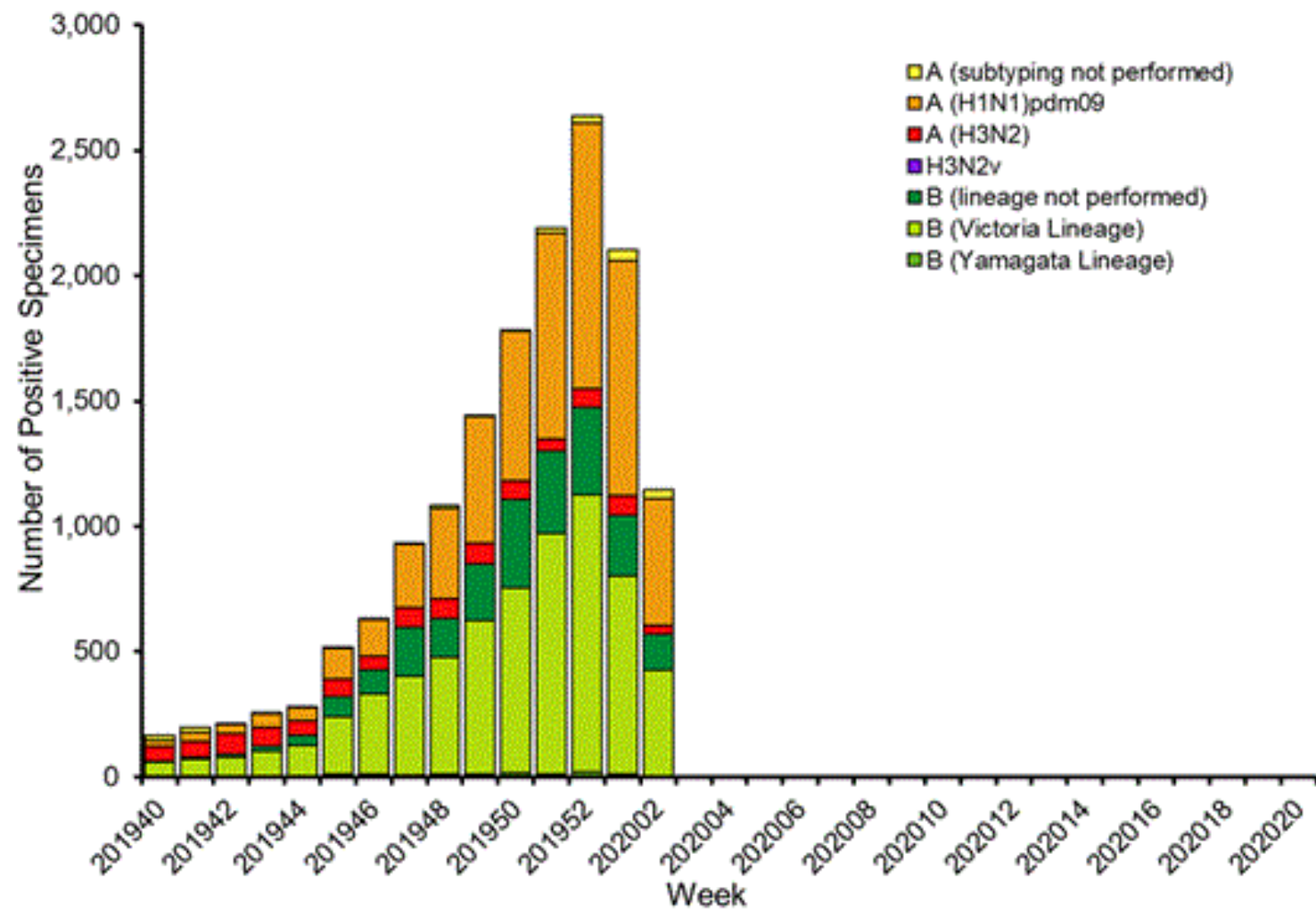


ESSENCE Weekly Outpatient Clinic Visits for Influenza-like Illness

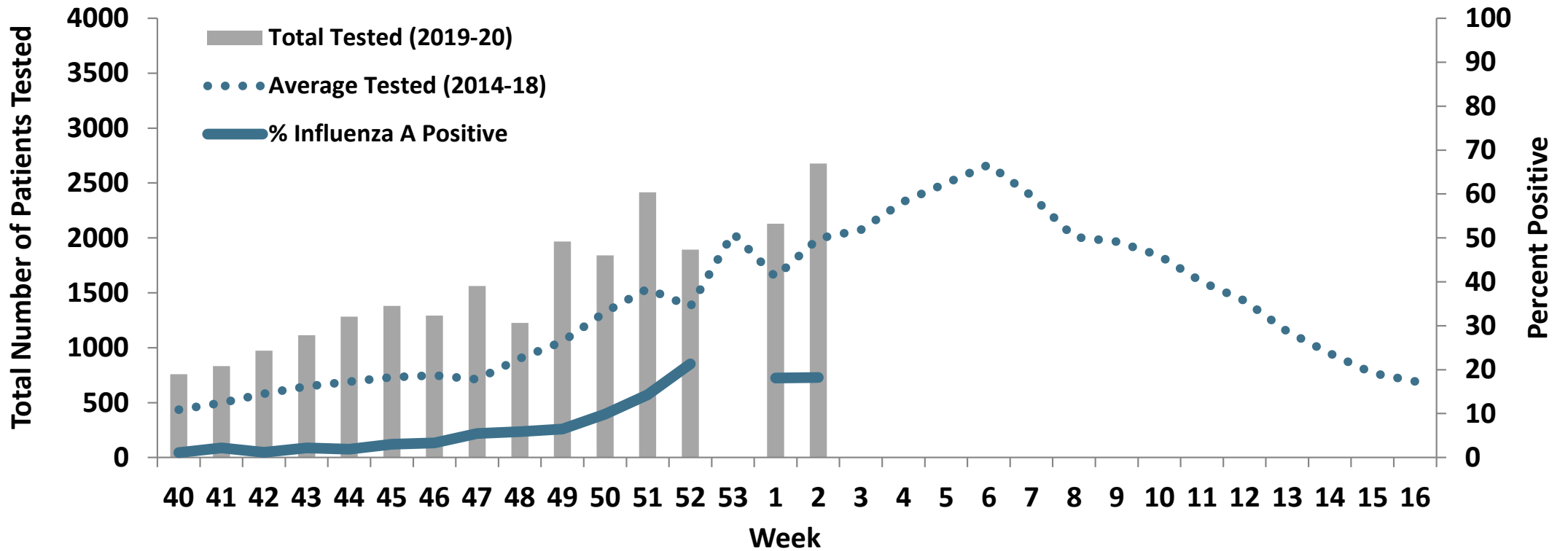
Army MTFs, All Services, 2016-2019



Influenza Positive Tests Reported to CDC by U.S. Public Health Laboratories, National Summary, 2019-2020 Season



Proportion of Positive Influenza A Specimens for U.S. Army 2019-2020



Laboratory Respiratory Specimen Testing: Weeks 51 – 2

		Week 51	Week 52	Week 1	Week 2	Season Total
Test Types Among Positive Influenza A Specimens	RAT	199	222	188	275	1130
	Culture	4	0	2	1	31
	PCR	142	181	196	211	1099
Army MTF Laboratory Results, 2019-20	Influenza A	345	403	386	487	2260
	Influenza B	394	470	349	418	2786
	Adenovirus	11	6	6	7	129
	Enterovirus	0	0	0	0	7
	Parainfluenza	13	8	6	8	178
	RSV	181	114	106	119	1140
	Negative	4361	3085	3777	4652	45278
	Total	5305	4086	4630	5691	51778

